



 **IN-PERSON &  LIVE VIRTUAL EVENT**
FOR PATIENTS, SURVIVORS &
HEALTHCARE PROFESSIONALS / **CE CREDITS AVAILABLE**

2024 RHODE ISLAND CANCER SUMMIT

A DECADE OF PROMISE FOR SURVIVORSHIP IN 2024: UNLOCKING THE CODE TO CANCER PREVENTION

October 16, 2024

SINCERE THANKS TO OUR SPONSORS

Gold Sponsor



Silver Sponsor





2024 RHODE ISLAND CANCER SUMMIT
A DECADE OF PROMISE FOR
SURVIVORSHIP IN 2024
**UNLOCKING THE CODE
TO CANCER PREVENTION**

AGENDA

8:00 am – 8:15 am Welcoming Remarks

James Willsey, Conference Facilitator

Patricia Stout, DNP, APRN-CNP, Board Chair, PRCRI; Professor Emerita, College of Nursing, University of Rhode Island

Megan Daniel, Executive Director, PRCRI

8:15 am – 8:20 am Greetings from the Rhode Island Department of Health

Olutosin Ojugbele, MD, MPH, Medical Director, RIDOH

8:20 am - 8:45 am Rhode Island Cancer Epidemiology Report

Victoria Fruh, PhD, Rhode Island Cancer Registry Program Manager, RIDOH

8:45 am – 9:00 am Welcome from CDC

Nikki Hayes, MPH, Chief, Comprehensive Cancer Control Branch, Division of Cancer Prevention and Control, National Center for Chronic Disease Prevention and Health Promotion, Centers for Disease Control and Prevention

9:00 am – 10:00am Keynote | Cancer: Unlocking the Code In the Cell, Clinic, and Community

Sheldon L. Holder, PhD, MD, Assistant Professor of Pathology and Laboratory Medicine at Brown University, Attending Physician in the Division of Hematology/Oncology at the Lifespan Cancer Institute

10:00 am – 10:15 am Award Presentations

10:15am – 10:45 am Exhibitor Break

10:45 am – 11:45 am Poster Presentation: Best Practices in Cancer Care

Heather Murphy, MSN, FNP, AOCNP, Nurse Practitioner, Dana Farber Cancer Institute-Breast Oncology Team

Wendy Garvin Mayo, DNP, APRN, ANP-BC, CEO, Collaborative Cancer Care

Nancy Lebrun, BS, ODS-C, Director, Cancer Information Systems, Education and Training Coordinator, Rhode Island Cancer Registry

11:45 am – 12:15 am Sponsor Break, Snacks

12:15 am – 1:15 pm Genetics Guidance: A Fireside Chat on Enhancing Cancer Prevention and Treatment

Marcina L. Beaston, MS, CGC, Senior Genetic Counselor, Women & Infants Hospital

Ellie Prousaloglou, MD; Physician Lead, Breast Cancer Genetics and High-Risk Breast Care at Smilow Cancer Genetics and Prevention Program; Assistant Professor of Surgery Section of Breast Surgery, Division of Surgical Oncology at Yale University,

Mary Mounier, MS, Cancer Survivor

Moderated by: Robert Legare, MD, FACP, Associate Professor of Clinical Medicine, Yale School of Medicine; Medical Director, Smilow Cancer Hospital Care Center at Westerly, RI and Waterford, CT

1:15 pm – 1:30 pm Closing Remarks

OUR PRESENTERS



Olutosin Ojugbele, MD, MPH is the medical director of community health and equity and environmental health at the Rhode Island Department of Health. She is an assistant professor of pediatrics and practices primary care in the community. Dr. Ojugbele completed her MD and an MPH in community health science at SUNY Downstate, pediatric residency at Northwell Health/Cohen Children's Hospital as well as a post-doctoral fellowship in primary care research at Dartmouth Hitchcock. Her focus is on clinical linkages to public health, the delivery of healthcare and public health as it pertains to social justice and addressing health disparities through collaborative work.

Victoria Fruh, MPH is the Cancer Registry Program Director and Manager at the Rhode Island Department of Health. She leads evaluations of RI cancer registry data and assesses cancer rates across the state.



Nikki Hayes, MPH has been with the CDC's Division of Cancer Prevention and Control (DCPC) in the agency's National Center for Chronic Disease Prevention and Health Promotion (NCCDPHP) since 2002. Nikki is currently the Chief of the DCPC Comprehensive Cancer Control Branch and is responsible for the successful implementation of one of the agency's flagship, multi-million-dollar, cancer prevention and control programs, the National Comprehensive Cancer Control Program (NCCCP). She also manages several other programs that focus on improving the quality of life of cancer survivors, particularly young breast cancer survivors and metastatic breast cancer patients; and advocating commercial tobacco use prevention and cancer prevention in populations experiencing tobacco- and cancer-related health disparities.



Sheldon L. Holder, PhD, MD, is a physician scientist at the Legorreta Cancer Center at Brown University. Dr. Holder received his PhD and MD from Loma Linda University and completed Internal Medicine residency at Penn State Milton S. Hershey Medical Center. He completed his oncology training at Vanderbilt University. His clinical focus is in genitourinary cancers where he treats patients with kidney, prostate, bladder and testicular cancers. In the lab, Dr. Holder works to identify oncogenic mechanisms and develop novel therapeutic regimens including evaluating PIM1 kinase as a therapeutic target in renal cell carcinoma.



Nancy Lebrun, BS, ODS-C began her career in cancer registry as an auditor for the Comparative Effectiveness Research project in 2011. She received her certification in tumor registry (CTR) in 2013 and continued working for the Rhode Island Cancer Registry as the education and training coordinator, enhanced data specialist, and cancer registrar. She received her bachelor's in science with a concentration in healthcare management from Fisher College in 2019 and is currently the Director of Cancer Information Systems for the Rhode Island Cancer Registry at the Hospital Association of Rhode Island. She is very active with the Cancer Registrars Association of New England (CRANE) having served as vice president, president elect, president for the year 2017, and numerous committee chairs. She is also very active with the Partnership to Reduce Cancer in Rhode Island, working as a member of the Summit Committee.

OUR PRESENTERS



Heather Murphy, MSN, FNP, AOCNP graduated from Northeastern University in 1996 of the bachelor of science and nursing. From there she had her first job as an oncology nurse at New Haven Hospital on the GYN/Gyn Oncology unit. After a brief time at Yale New Haven, she moved back to be closer to home and took a job at Women & Infants Hospital of Rhode Island. During her tenure at Women and Infants, she first served as an assistant nurse manager for the inpatient GYN unit for 17 years. After this, she served briefly as Gyn Onc Educator, followed by Infusion Nurse Manager from 2014 through 2017. During this time Heather obtained her Masters/Family Nurse Practitioner degree at Massachusetts College of Pharmacy and Health Sciences. After graduation, Heather took her first job as a Nurse Practitioner at Women & Infants Breast Health Center. She served there for a period of seven years taking care of breast cancer patients and covering the infusion center. Most recently as of November 2023, she took a position at Dana Farber Cancer Institute in Boston, Massachusetts in the Breast Oncology Division. Heather has served on the Board for the Oncology Nursing Society of Rhode Island for more than 10 years and most recently as president of the Oncology Nursing Society board for period of two years from January 2022 through January 2024.



Wendy Garvin Mayo, DNP, APRN, ANP-BC is a healthcare leader with over 20 years of experience in clinical practice, leadership, research, academia, and the pharmaceutical industry. As the CEO of Collaborative Cancer Care, she leads a mental health practice dedicated to transforming support for cancer patients, family members, and oncology professionals. She is also the creator of The Stress Blueprint, a consulting firm focused on helping healthcare professionals manage stress through emotional intelligence. Dr. Garvin Mayo chairs the Connecticut Cancer Partnership Survivorship Board and serves on the Advisory Boards of AnCan, Bexa Equity Alliance, and TOUCH The Black Breast Cancer Alliance. Her contributions have earned her the University of Saint Joseph's Distinguished Alumni Award, the Nightingale Health Science Award, as well as the University of

Connecticut's Outstanding Alumni Award for Leadership in Nursing, the Eleanor K. Gill Award. An accomplished author, her book SHAPE Your Life: 5-Step Blueprint for Sustainable Stress Management reflects her commitment to mental and emotional well-being in the healthcare community. Dr. Garvin Mayo holds a bachelor's degree in nursing from the University of Saint Joseph, a master's degree in nursing from the University of Connecticut, and a Doctor of Nursing Practice degree with a focus on healthcare leadership from Quinnipiac University.



Robert Legare, MD, FACP, received his medical degree from Tufts University School of Medicine, and completed his residency training in Internal Medicine at Yale New Haven Hospital. He served as Co-Director of the Breast Health Center and Director of the Cancer Genetics and Prevention Program at the Women and Infants Hospital in Providence, RI. Dr. Legare is actively involved in clinical research focusing on breast and ovarian cancer as well as studying hereditary cancer syndromes. Robert is now currently Associate Professor of Clinical Medicine, Yale University School of Medicine; Medical Director, Smilow Cancer Hospital Care Center at Westerly, RI and Waterford, CT.

OUR PRESENTERS



Marcina L. Beaston, MS, CGC, is a Senior Genetic Counselor with the Cancer Genetics and Prevention Program at Women & Infants Hospital. She started at the program in July 2015, after earning her degree in Genetic Counseling from Brandeis University. Marcie's passion is helping people understand the complexities of cancer genetics and feel safe and confident with decisions and results related to genetic testing. In this pursuit, she gravitates toward opportunities such as today's event. In May 2021, she spoke at the CUREs Educated Patients Webinar: Empowering Patients to Understand Genetic Testing/Counseling. Earlier this year, she participated in the Minister's Alliance of Rhode Island: Health and Healing Project, which aims to increase cancer screening and reinforce survivorship support particularly in Rhode Island's vibrant Black and Brown communities.



Ellie Proussaloglou, MD, is an Assistant Professor of Surgery (Breast Surgical Oncology) at Yale University and the Physician Lead for High Risk Breast for the Smilow Cancer Genetics and Prevention Program. She completed her fellowship in Breast Surgery at Yale University and her residency in Obstetrics and Gynecology at Brown University/Women & Infants Hospital of RI. Her joint training in breast and gynecologic surgery allows her to provide comprehensive counseling about breast cancer care, along with a thorough understanding of the gynecologic and sexual side effects of care. Her research focuses on decisions facing patients undergoing surgery or high-risk screening, with an emphasis on the financial side effects of care. She has led interdisciplinary research focused on survivorship, quality of life, and sexual health after cancer diagnosis, including novel

research on financial toxicity in BRCA carriers. She has local and national advocacy experience as the Legislative Chair for District 1 (New England) of the American College of Obstetricians and Gynecologists. She is particularly passionate about caring for high-risk genetic mutation carriers and young women with breast cancer.



Mary Mounier, MS was born in 1955, facing the challenges of premature birth and a diagnosis of skin cancer. Over the years, she has confronted and overcome multiple health adversities, including colon cancer in 1985 and a diagnosis of Crohn's disease. In 2000, Mary became certified to support the "Yo Si Puedo" group for the American Cancer Society, dedicating herself to helping others battling cancer. In 2007, she was diagnosed with endometrial cancer, leading to a hysterectomy and subsequent genetic testing, which confirmed Lynch Syndrome. Despite these trials, Mary has shown remarkable resilience, surviving cancer of the parotid gland in 2010 and metastatic urothelial cancer in her left kidney in 2017. In 2019, she underwent a Whipple procedure to address further health issues affecting her pancreas, small intestine, and stomach. Mary's professional career

included significant contributions to social services, having worked at St. Joseph Hospital Urgent Care, John Hope Settlement House, and Federal Hill House. Her dedication to serving others and her strength in the face of continuous health challenges are testaments to her indomitable spirit.



2024 RHODE ISLAND CANCER SUMMIT
A DECADE OF PROMISE FOR
SURVIVORSHIP IN 2024
**UNLOCKING THE CODE
TO CANCER PREVENTION**

AWARDS

The Partnership is recognizing two individuals whose contributions have helped to prevent cancer and improve access to quality cancer care for all Rhode Islanders.

The Partnership Community Spirit Award

The 2024 recipient is
Regina Donald, MBA, BSN, RN

The Partnership's Spirit Award recognizes an outstanding work, project, or collaboration in the past year that has enhanced the mission of the Partnership, a broad-based coalition of stakeholders who coordinate and integrate processes to implement Rhode Island's Comprehensive Prevention and Control Plan. The Spirit Award recognizes an individual or an organization.

The Partnership Outstanding Advocacy Award

The 2024 recipient is Joseph Dziobek, MSW

The Outstanding Advocacy Award recognizes a community member for their efforts in advocating for changes that improve the quality of life for individuals affected by cancer. This may include garnering community support for legislation, testifying at the Statehouse and speaking with legislators on the importance of bills that affect cancer care.

PLANNING COMMITTEE

Thank you to our Summit Planning Committee, Volunteers and Consultants!

For your dedicated efforts in making this year's Cancer Summit a success.

Lynn Basilio
Elena Blanchette
Matthew Blanchette
Megan Daniel
Sheri Daniel
Susan DeSanto-Madeya
Regina Donald
Joseph Dziobek
Linda Dziobek

Dalton Everett
Tandra Falu
Chris Gadbois
Maria Gemma
Sarah Gingrich
Norma Hardy
Susan Hartman
Nancy Lebrun
Lou Leta

Diane Martins
Jeanette Nessette
Phanida Phivilay
Mike Ratté
Ineida Rocha
C Kelly Smith
Patricia Stout
Jim Willsey
Susan Yarbrough



2024 RHODE ISLAND CANCER SUMMIT A DECADE OF PROMISE FOR SURVIVORSHIP IN 2024 UNLOCKING THE CODE TO CANCER PREVENTION

CONTINUING EDUCATION

CEUs For Today's Summit



JOINTLY ACCREDITED PROVIDER™
INTERPROFESSIONAL CONTINUING EDUCATION

In support of improving patient care, this activity has been planned and implemented by Centers for Disease Control and Prevention and Partnership to Reduce Cancer in Rhode Island. The Centers for Disease Control and Prevention is jointly accredited by the Accreditation Council for Continuing Medical Education (ACCME), the Accreditation Council for Pharmacy Education (ACPE), and the American Nurses Credentialing Center (ANCC), to provide continuing education for the healthcare team.

CME: The Centers for Disease Control and Prevention designates this **live** activity for a maximum of **3.75 AMA PRA Category 1 Credits™**. Physicians should claim only the credit commensurate with the extent of their participation in the activity.

CNE: The Centers for Disease Control and Prevention designates this activity for **3.75** nursing contact hours.

CPE: The Centers for Disease Control and Prevention designated this **knowledge-based** event for pharmacists to receive **3.75** contact hours (**0.375** CEUs) in pharmacy education. The Universal Activity Number is **JA4008229-9999-24-101-L01-P**.

Once credit is claimed, an unofficial statement of credit is immediately available on CDC TRAIN. Official credit will be uploaded within 60 days on the NABP/CPE Monitor.

CECH: Sponsored by the Centers for Disease Control and Prevention, a designated provider of continuing education contact hours (CECH) in health education by the National Commission for Health Education Credentialing, Inc. This program is designated for Certified Health Education Specialists (CHES®) and/or Master Certified Health Education Specialists (MCHES®) to receive up to **4.0** total Category I continuing education contact hours. Maximum advanced level continuing education contact hours available are **4.0**. Continuing Competency credits available are **4.0**. CDC provider number **98614**.

DISCLOSURE: In compliance with continuing education requirements, all planners and presenters/moderators must disclose all financial relationships, in any amount, with ineligible companies over the previous 24 months as well as any use of unlabeled product(s) or products under investigational use.

CDC, our planners, and presenters/moderators wish to disclose they have no financial relationship(s) with ineligible companies with the exception of Dr Holder and Ms Mayo. Dr Holder wishes to disclose that he is Chief Medical Officer for AccesscareApp. Ms Mayo wishes to disclose that she is a former employee of Johnson & Johnson. All relevant financial relationships listed for these individuals have been mitigated.

CDC did not accept financial or in-kind support from ineligible companies for this continuing education activity.

ODS: The NCRA Program Recognition Committee has determined "2024 Rhode Island Cancer Summit" program supports **3.5** CE hours of which 2 hours meet the Category A requirement.

SW: **3.5** CE hours are pending by the NASWRI review committee.

CHW: Email Sarah Gingrich at sgingrich@prcri.org for a certificate of attendance.



2024 RHODE ISLAND CANCER SUMMIT

A DECADE OF PROMISE FOR SURVIVORSHIP IN 2024

UNLOCKING THE CODE TO CANCER PREVENTION

THE PARTNERSHIP

Mission Statement

"The mission of the Partnership to Reduce Cancer in Rhode Island is to lead and collaborate on efforts to prevent cancer and to improve the quality of life for all Rhode Islanders living with cancer through education, advocacy, and supportive resources."

Vision Statement

"Create a cancer free Rhode Island through leadership and community engagement."

Guiding Values

- A culture of integrity, collaboration, transparency, and excellence.
- Inclusive, equitable, and accessible healthcare.
- The efforts of all who work with and on behalf of the Partnership to Reduce Cancer in Rhode Island in pursuit of its mission.
- The voices, experiences, and personal stories of cancer survivors and their families.
- A diverse, engaged membership and their role in and contributions to the organization.
- Innovation through evidence-based practice, quality improvement, and research.

The Partnership has continued to grow over the past year, thanks to the support of our sponsors, partners, and members.

Work groups met regularly over the past year to address palliative care, lung cancer screening, oral health, and cancer prevention, screening, and early detection needs across Rhode Island. In January, we relaunched our in-person quarterly meetings, hosting three events across the state with guest speakers, providing great opportunities for networking and member engagement.

This year, we distributed 350 oral health kits to medical centers and supported cancer centers with community screening events. At local beaches, we helped screen over 350 individuals for skin cancer with the support of our partners at five locations. We also participated in several outreach events with our community partners.

None of this would have been possible without the dedication of our members, volunteers, community partners, and sponsors. Thank you for your ongoing efforts to work together for a better tomorrow.

Ready to join us?

Please fill out our membership form online by scanning the QR code or contact us at reducecancer@gmail.com with any questions regarding the membership application.



For more information or to access our resources, please visit us at www.PRCRI.org



www.PRCRI.org



Reducecancer@gmail.com



[@REDUCECANCERRI](https://www.facebook.com/REDUCECANCERRI)



[@PARTNERSHIP TO REDUCE
CANCER IN RHODE ISLAND](https://www.linkedin.com/company/@PARTNERSHIP%20TO%20REDUCE%20CANCER%20IN%20RHODE%20ISLAND)



[@REDUCECANCERRI](https://www.instagram.com/REDUCECANCERRI)



DeltaVision®

Delta Dental of Rhode Island
proudly supports the
Partnership to Reduce
Cancer in Rhode Island.

SERVIER

moved by you



Rhode Island Commission on the Deaf and Hard of Hearing

WWW.CDHH.RI.GOV



Mission Statement: To provide innovative leadership in public policy, advocacy, service delivery and accessibility throughout the Ocean State, RICDHH ensures opportunities for each deaf and hard of hearing person to become an empowered, contributing citizen.

RICDHH Main Office

Voice/VP: (401) 256-5511

Email: cdhh.main@cdhh.ri.gov

Interpreter/CART Referral Service

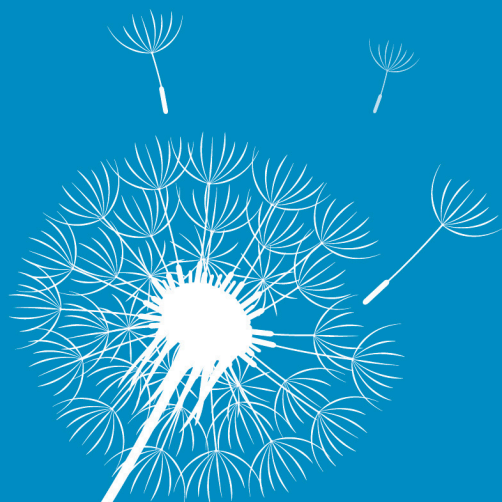
Voice/VP: (401) 354-7630

Email: cdhh.interpreter@cdhh.ri.gov

BE SURE TO SIGN UP FOR OUR MAILING LIST AND
CHECK OUR SOCIAL MEDIA ACCOUNTS FOR UPDATES!



Congratulations to PRCRI for convening the 2024 Rhode Island Cancer Summit!



RIDOH's cancer prevention and control programs thank everyone working to prevent, diagnose, treat, support and empower cancer survivors.



We Proudly Support the Partnership to Reduce Cancer in Rhode Island

At the Program in Women's Oncology at Women & Infants Hospital, we are dedicated to making a difference in the lives of those facing cancer.

Our Comprehensive Program Includes:

- » Breast Health and Cancer Center
- » Gynecologic Cancers
- » Infusion Center
- » Basic, Translational and Clinical Trials Research
- » Cancer Genetics & Prevention
- » Integrative Care

Caring for people in Rhode Island, Connecticut, and Massachusetts.





Landmark Medical Center
Proudly Supports the Mission of

THE 2024 RHODE ISLAND ANNUAL CANCER SUMMIT



Landmark Medical Center

Proud Member of Prime Healthcare

Woonsocket, RI • (401) 769-4100

Serving northern Rhode Island & neighboring Massachusetts.

landmarkmedical.org

Community Support & Charitable Giving

At BankRI, we believe that tomorrow's generations deserve the support of healthy communities today. Through our robust employee volunteer program, community-based financial grants, and charitable giving, BankRI is proactively committed to making a difference in today's communities - with tomorrow in mind.

STRONG & TRUSTED.

Learn why more people trust BankRI's financial strength and services for banking that empowers their personal financial lives, businesses and the well-being of Rhode Island's communities at BankRI.com

BANKRI
BANKRHODEISLAND.COM

Member FDIC
Equal Housing Lender NMLS #410623



Rhode Island
Public Health
ASSOCIATION

NEW DATA WORK RELEASE

Community Health Reports for Pawtucket & Central
Falls.

Central Falls

Community Health Report



Pawtucket

Community Health Report



Scan the QR
code and
download.

www.ripha.org



The Rhode Island Health Center Association
works to support, sustain, and strengthen
community health centers so they can
provide high-quality, patient-centered,
integrated and equitable primary health
care to their patients and communities.

Please visit
www.rihca.org



Ruth's

INTIMATE APPAREL * MASTECTOMY PRODUCTS

106 ROLFE STREET
CRANSTON, RI 02910

RUTHSOFRI@AOL.COM

401 941-5155

TUES WED THURS FRI SAT 10 - 5



**The most advanced
cancer treatments.**
Delivered locally with
the greatest of care.

Yale
NewHaven
Health
Smilow Cancer
Hospital



At **GSK US Oncology, we measure success by the number of people we positively impact.**

People are at the heart of what we do, and they inspire us to redefine cancer care.



 Explore our authentically human approach to oncology at us.gsk.com

Trademarks owned or licensed by GSK. ©2023 GSK or licensor. ONJRNA230004, March 2023. Produced in USA.



 **FOUNDATION MEDICINE®**

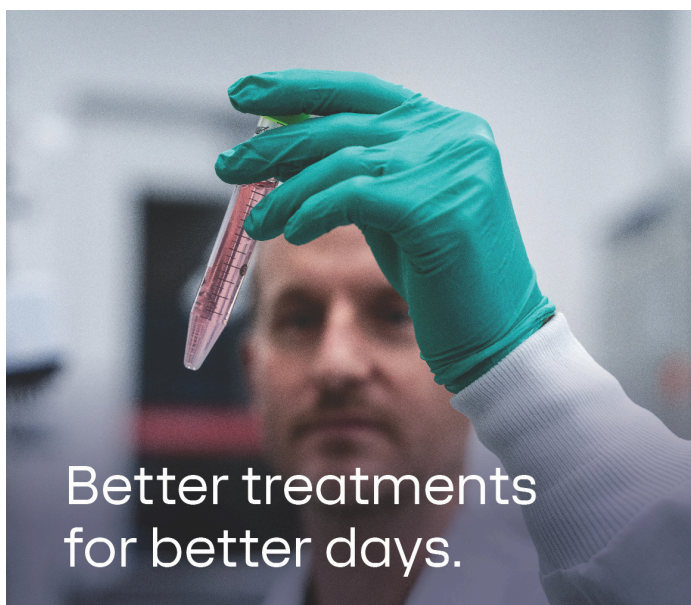
Miss. Not. One.

Advanced Cancer Patient

Are you missing guideline-recommended genes, therapies, or clinical trial matches with your current test? Try Foundation Medicine testing to Miss. Not. One.

www.foundationmedicine.com

US-PF-2400155



Better treatments for better days.

We're dedicated to making a difference in people's lives every day—creating medicines and solutions that help patients, communities, and our world.

abbvie abbvie.com



Stemline®
A Menarini Group Company



Oncology



Wealth Management Resources, Inc.

Registered Investment Advisor

**Fiduciary Financial Planners
and Investment Advisors**

Serving New Englanders for 30 Years



Happy Fall from Wealth Management's mascots!

30 1994-2024
YEAR
ANNIVERSARY

28 Cedar Swamp Road
Smithfield, RI 02917
401-356-1400
wealthmanagers.com